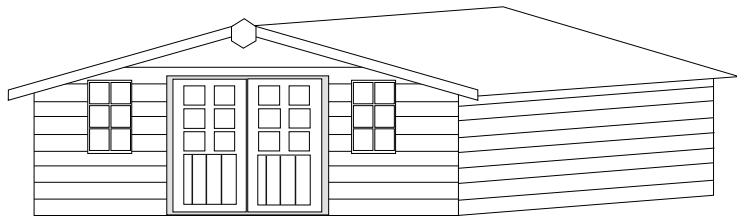


# GARDEN OFFICES



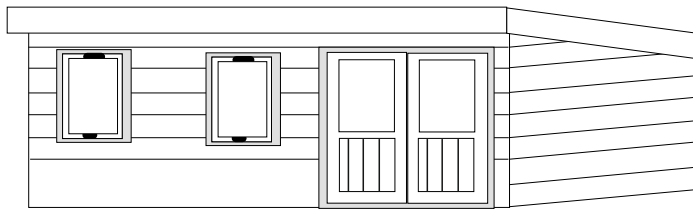
## **PREMIER**

FRAME SIZE 70mm X 35mm

CLADDING SIZE shiplap finished @ 15mm thick

STANDARD TIMBER

SUMMER HOUSE DOORS & WINDOWS



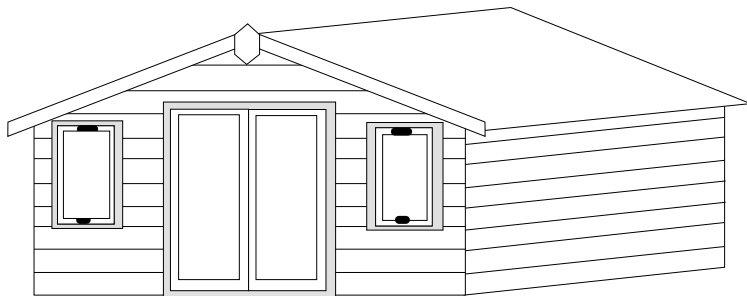
## **ROBUST**

FRAME SIZE 70mm X 35mm

CLADDING SIZE shiplap finished @ 20mm thick

HEAVY DUTY TIMBER

SUMMER HOUSE DOORS & WINDOWS



## **ROBUST DELUXE**

FRAME SIZE 70mm X 35mm

CLADDING SIZE shiplap finished @ 20mm thick

UPVC DOORS & WINDOWS

LOWEST EVE 1.9M  
HIGHEST EVE 2.3M

## **ALL MODELS**

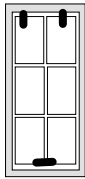
INSULATION = ECOTHERM 50MM

LINNING = 12MM TVG TIMBER

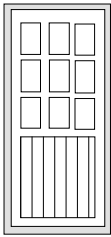
All cladding is now attached using stainless steel nails

SIZE	PREMIER base coat treatment only	ROBUST base coat treatment only	ROBUST DELUXE base coat treated only	TOP COAT	bearers + set out	bASE WORK
2.4X2.4m (8X8)	£4092	£5059	£6813	+£245	+£80	+£537
3X2.4m (10X8)	£4708	£5698	£7448	+£280	+£80	+£550
3.6X2.4m (12X8)	£5392	£6404	£8149	+£310	+£110	+£654
3X3m (10X10)	£6236	£7259	£8996	+£385	+£200	+£730
3.6X3m (12X10)	£7020	£8065	£9798	+£420	+£220	+£746
3.6X3.6m (12X12)	£7844	£8923	£10,643	+£480	+£240	+£1012
6X3.6m (20X12)	£10,527	£12,072	£13,775	+£630	+£340	+£1556

SUMMER HOUSE  
TIMBER WINDOWS

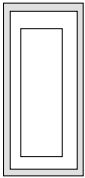


+£110

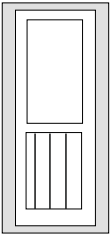


+£290

ROBUST  
HEAVY DUTY  
TIMBER WINDOWS  
SAFETY GLASS

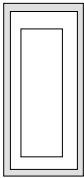


+£220

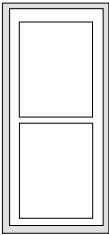


+£470

UPVC DOUBLE GLAZED  
TIMBER WINDOWS



+£250



+£570

# STIX & STONES

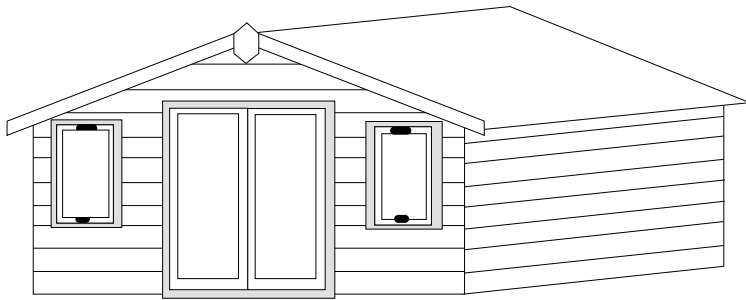
SPECIALIZING IN BESPOKE GARDEN BUILDINGS

## GARDEN OFFICES

STIX & STONES  
MAIN ROAD  
ALRESFORD  
COLCHESTER  
ESSEX CO7 8DD

EMAIL: [info@stixandstones.co.uk](mailto:info@stixandstones.co.uk)  
WEBSITE: [stixandstones.co.uk](http://stixandstones.co.uk)

## 2021 ISSUE No 5



**ROBUST DELUXE**

ALL PRICES INCLUSIVE OF V.A.T.

**TEL: 01206 826835**

**MON - FRI 8.30am-4.00pm**  
**SAT-8.00am-12.00 noon**